

Tocs tradicionals
Matinades llargues

Gralla 1

Gralla 2

Timbal

$\text{♩} = 60$

7

G

G

T

20

G

G

T

35

G

G

T

42

G

G

T

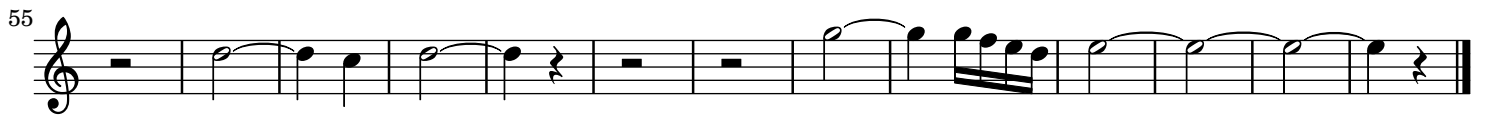
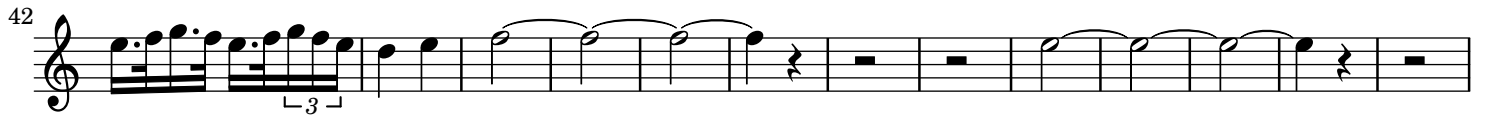
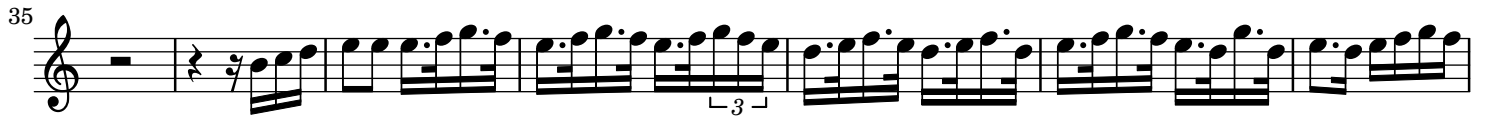
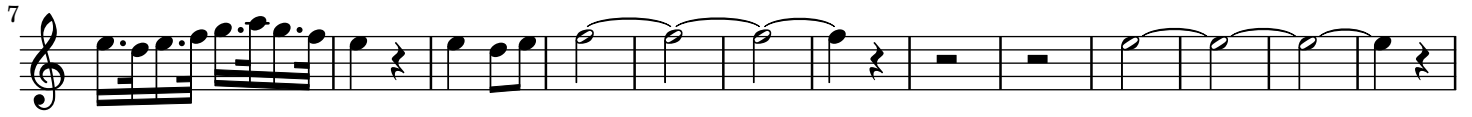
55

G

G

T

Tocs tradicionals
Matinades llargues
Gralla 1



Tocs tradicionals
Matinades llargues
Gralla 2

♩ = 60

7

20

35

42

54

Tocs tradicionals
Matinades llargues
Timbal

♩ = 60

1 2 3 4 5 6 7 8 9 10 11 12 13 14 15

16

16 17 18 19 20 21 22 23 24 25 26 27 28 29 30 31 32

33

33 34 35 36 37 38 39 40 41 42 43 44 45 46 47 48 49

50

50 51 52 53 54 55 56 57 58 59 60 61 62 63 64 65 66